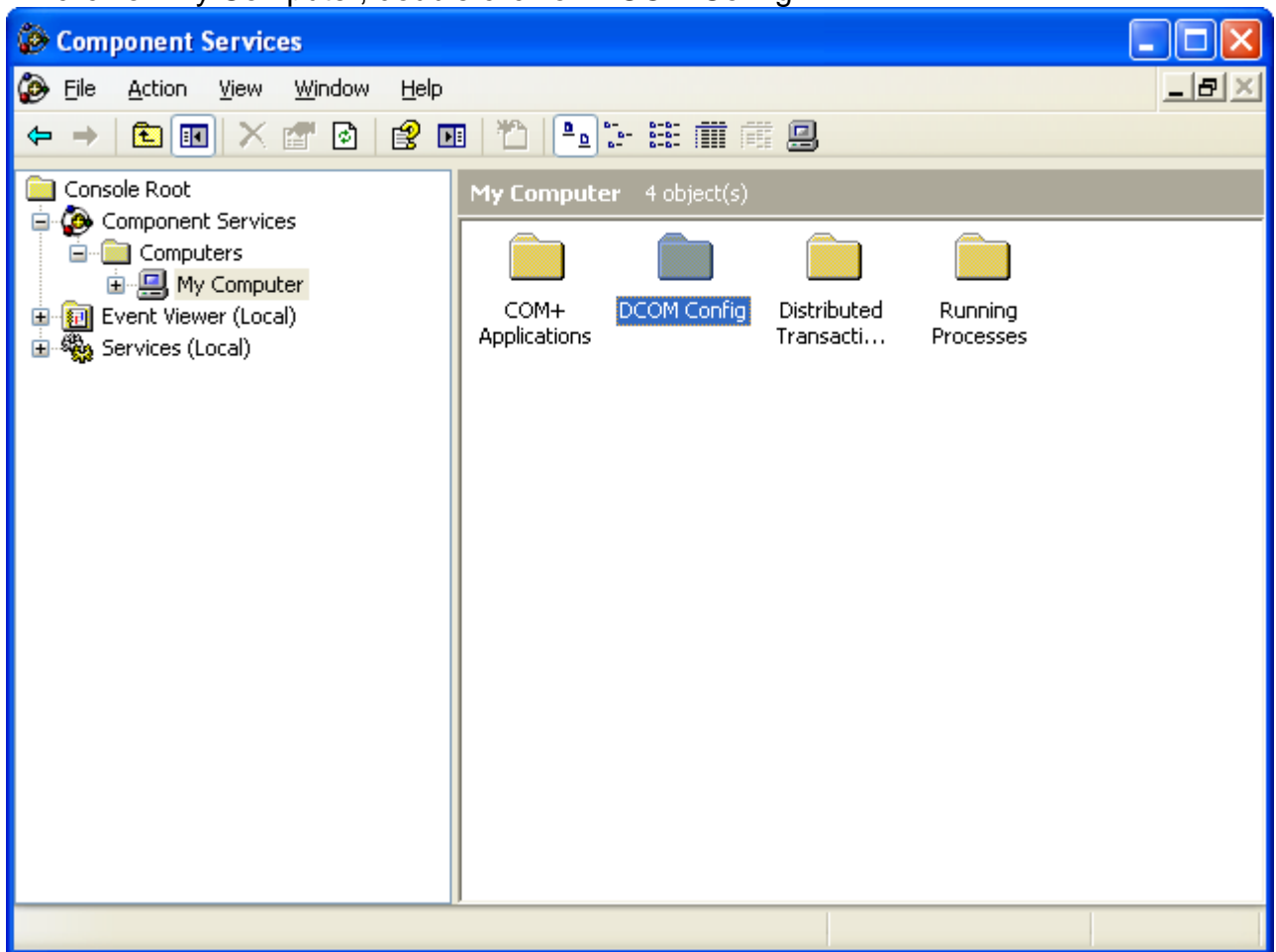
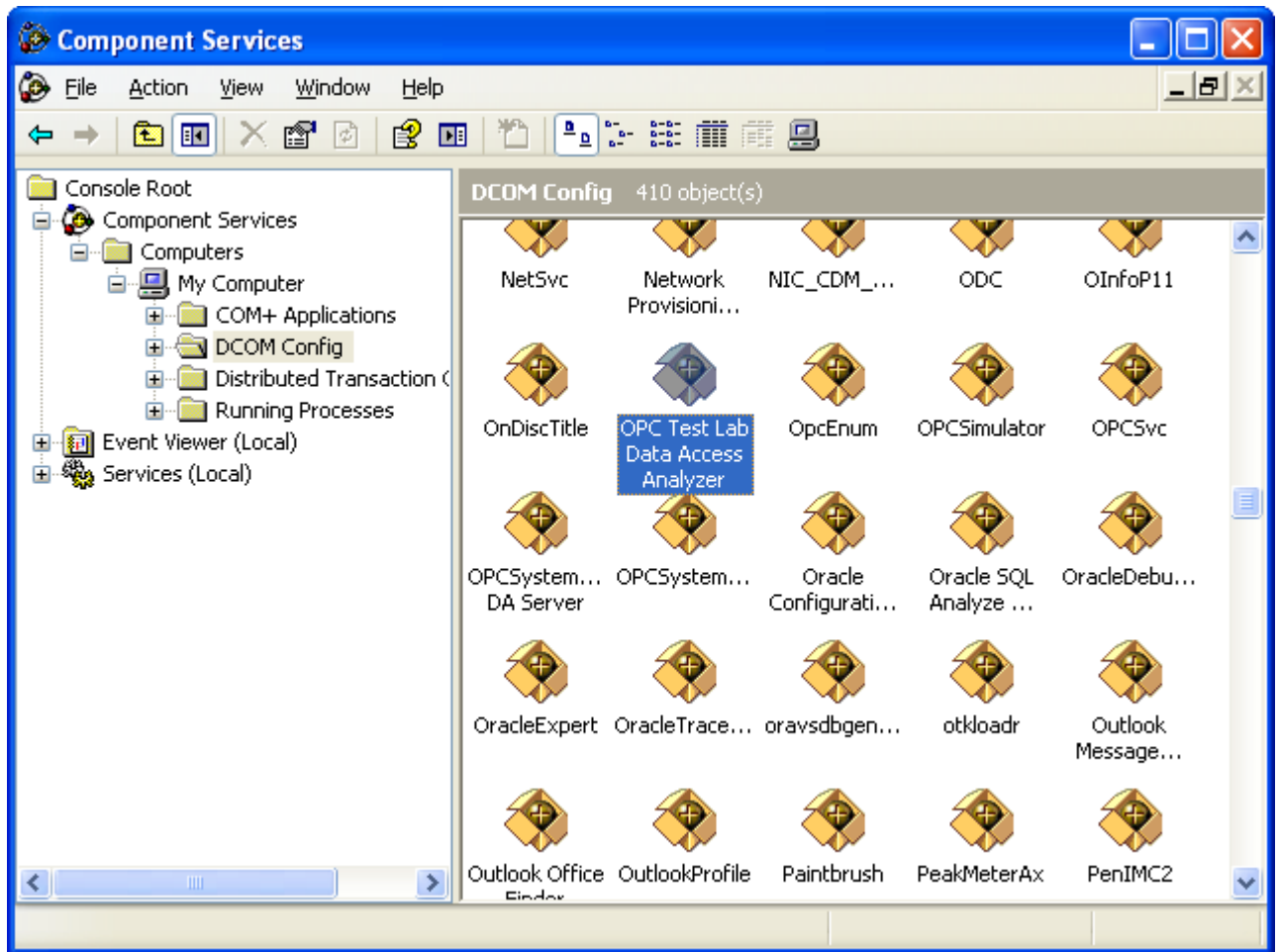


## Steps to troubleshoot faulty OPC Servers with OPC Foundation Analyzer

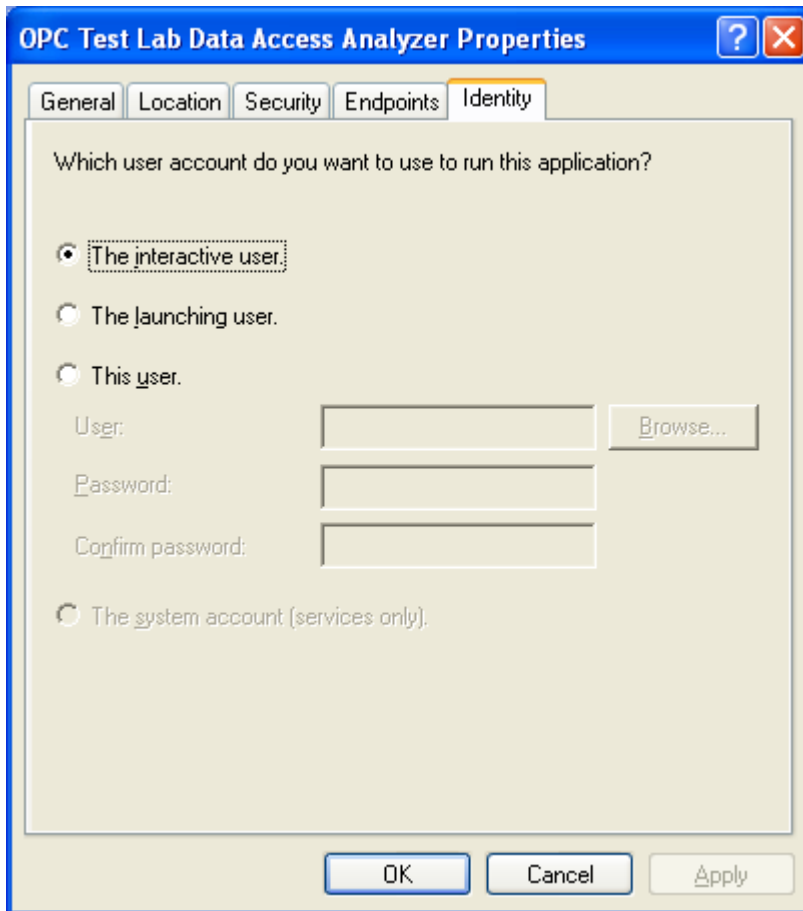
1. Download OPC Foundation Analyzer from [www.opcsystemserver.com/OPCAnalyzer1.02.1012.zip](http://www.opcsystemserver.com/OPCAnalyzer1.02.1012.zip).
2. Install OPC Foundation Analyzer onto system where OPC Systems.NET and OPC Foundation Sample Client is installed.
3. Start the DCOM Configurator by selecting Start-Run and type DCOMCNFG.
4. Double click on Component Services, double click on Computers, double click on My Computer, double click on DCOM Config.



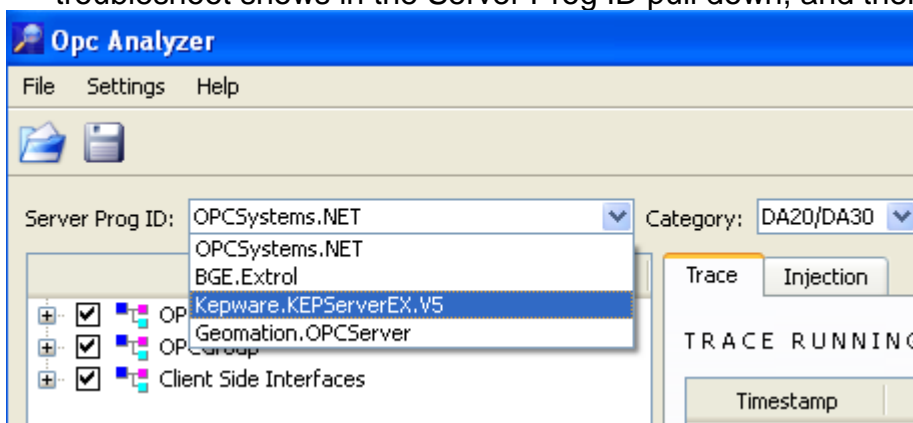
5. Select OPC Test Lab Data Access Analyzer and right click to select Properties.



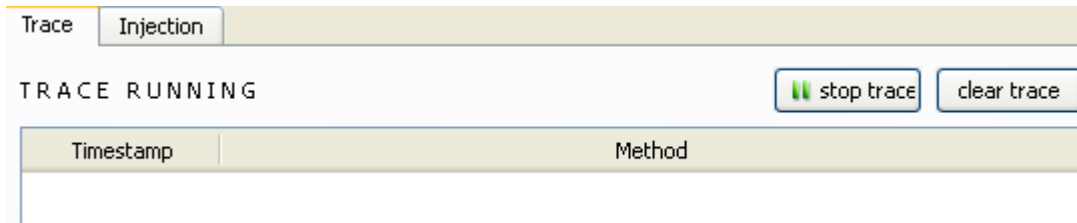
6. Under the Identity tab set the OPC Test Lab Data Access Analyzer server to Interactive User.



7. Start the OPC Analyzer from the program group OPC Foundation-Test Suite 1.0-OPC Analyzer.
8. Set the Category to DA20/DA30, DA20, or DA30 until the OPC Server to troubleshoot shows in the Server Prog ID pull down, and then select it.



9. Verify that the Trace is running in the right window.



10. Use the OPC Foundation Sample Client to connect to the server OPCTestLab.OpcAnalyzer with the steps list under the OPC Systems.NET Help file in the section Troubleshooting-OPC Connection-OPC Foundation Sample Client which can also be viewed on-line at <http://www.opcsystems.com/help/opcfoundationssampleclient.htm>.
11. Once the problem with browsing, reading, or writing data is replicated select File-Save Trace in the OPC Analyzer and send the file to [support@opcsystems.com](mailto:support@opcsystems.com). You can view problems in the right window with items that are highlighted red.
12. If you have another OPC Client that is not fully compliant and works with the problem OPC Server repeat the steps 9, 10, and 11, but using the non compliant OPC Client instead of the OPC Foundation Sample Client. Save this file with File-Save Trace in the OPC Analyzer and also send to [support@opcsystems.com](mailto:support@opcsystems.com).